

HIRETECH HT7-2 DISC FLOOR SANDER PARTS LIST

Ref	PSTK	Description	Pack Qty	Notes
001	010010	Screw	4	
002	011600	Switch 220/240 Volt (Bias Off)	1	
002	011610	Switch 110/120 Volt (Bias Off)	1	
004	010050	Cover Motor	1	
005	010070	Housing Motor	1	
006	010080	Strain Relief	1	
007	010090	Cable Main Assembly 220/240 Volt (UK)	1	
007	010100	Cable Main 110 Volt (NA)	1	
007	010110	Cable Main Assembly 220 Volt (EEC)	1	
007	010120	Cable Main Assembly 240 Volt (AUS)	1	
007	010130	Cable Main Assembly 110 Volt (UK)	1	
008	010140	Handles Pack of 2	2	
009	010150	Screw Handle	4	
011	010170	Brush Block Assembly	1	
012	010180	Brush Motor	4	Do not allow any one motor brush to wear below a minimum length of 12mm (1/2in). Always replace motor brushes as a set of 4
013	010190	Screw	4	
014	010200	Washer	4	
015	010210	Screw	4	
016	010220	Screw and Washer Set	4	Washer not required when fitting Ref: 55 PSTK: 010630 Retainer
017	010230	Brush Spring	4	Replace brush springs every two (2) sets of motor brushes, always replace as a set of 4.
018	010240	Field 110/120 Volt HT7	1	
018	010250	Field 220/240 Volt HT7	1	
019	010260	Washer Clamp	2	
020	010270	Washer Lock	5	
021	010280	Screw	2	
022	010290	Baffle	1	
023	010300	Screw	3	
024	010600	Spring Load	1	
025	010320	Bearing	2	
026	010330	Armature 110/120 Volt	1	Fitted with bearing PSTK: 010320. Kit contains PSTK: 010420 x 1, PSTK: 000350 x 2, PSTK: 010320 x 1
026	010340	Armature 220/240 Volt	1	Fitted with bearing PSTK: 010320. Kit contains PSTK: 010420 x 1, PSTK: 000350 x 2, PSTK: 010320 x 1
027	010350	Key	3	
028	010360	Fan Motor	1	
029	010370	Gasket	1	
030	010380	Plate Exhaust	1	
031	010390	Fan Intake	1	
032	010400	Ring Retainer	1	
033	010410	Spacer Bearing	1	
034	010420	Seal	1	
035	010430	Ring Retainer	1	
036	010440	Pinion	1	
037	010450	Housing Gear	1	
039	010470	Screw	4	
040	010480	Frame Bag Support	1	

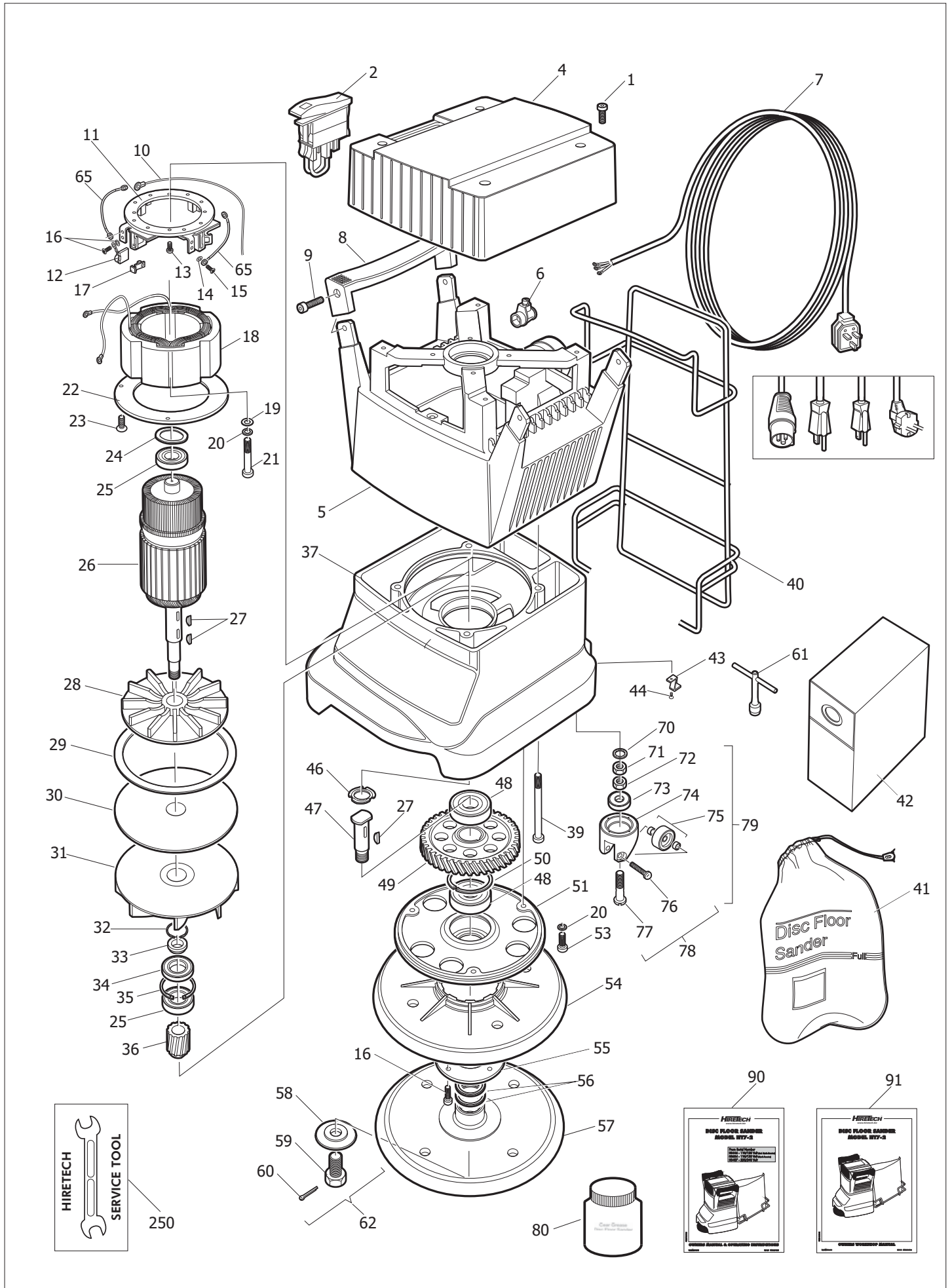
HIRETECH HT7-2 DISC FLOOR SANDER PARTS LIST

Ref	PSTK	Description	Pack Qty	Notes
041	010490	Bag Dust Cloth	1	
042	07038	Disposable Paper Dust Bag HT7/HTF Pack 2 (box 25)	25	
042	07040	Disposable Paper Dust Bag HT7/HTF (box 50)	50	
043	010510	Clip Wrench	2	
044	010520	Screw	2	
046	010540	Spring Load	1	
047	010550	Shaft Drive	1	
048	010560	Bearing	2	
049	010570	Gear Drive	1	
050	010580	Ring Retaining	1	
051	010590	Cover Gear	1	
053	010610	Screw	3	
054	010620	Guard Disc	1	
055	010630	Retainer	1	
056	010640	Shim	3	
057	012310	Sanding Pad HT7	1	
058	010660	Washer Clamp	1	
059	010670	Bolt Clamp	1	
060	010680	Pin Cotter	1	
061	010690	Wrench	1	
062	010720	Washer, Clamp and Pin Cotter Kit	1	
065	010750	Brush Shunt	2	
069	011680	Owners Manual & Operating Instructions	1	Download from http://www.hiretech.biz/downloads/owners-manuals
070	011170	Washer Lock	2	
071	011160	Nut Castor	2	
072	011440	Lock Nut Castor	2	
073	011070	Bearing Swivel	2	Use centre punch to peen four spots around top inside edge of housing to lock bearing in place
074	011080	Housing Castor	1	Includes PSTK: 011070 Bearing Swivel
075	011090	Wheel Castor	2	Includes bearings and spacers
076	011120	Screw Wheel	2	Always use thread lock when fitting/replacing screw
077	011150	Screw Swivel	2	Always reset castors and check sanding pad contact area when servicing castors. See Owners Manual & Operating Instructions
078	011155	Service Kit Castor	1	Includes 2 x Screw Swivel, 2 x 011170 Washer Lock, 2 x 011160 Nut Castor, 2 x Lock Nut Castor, 2 x 011070 Bearing Swivel. Note: Always reset castors and check sanding pad contact area when servicing castors. See Owners Manual & Operating Instructions.
079	010530	Castor Assembly	2	

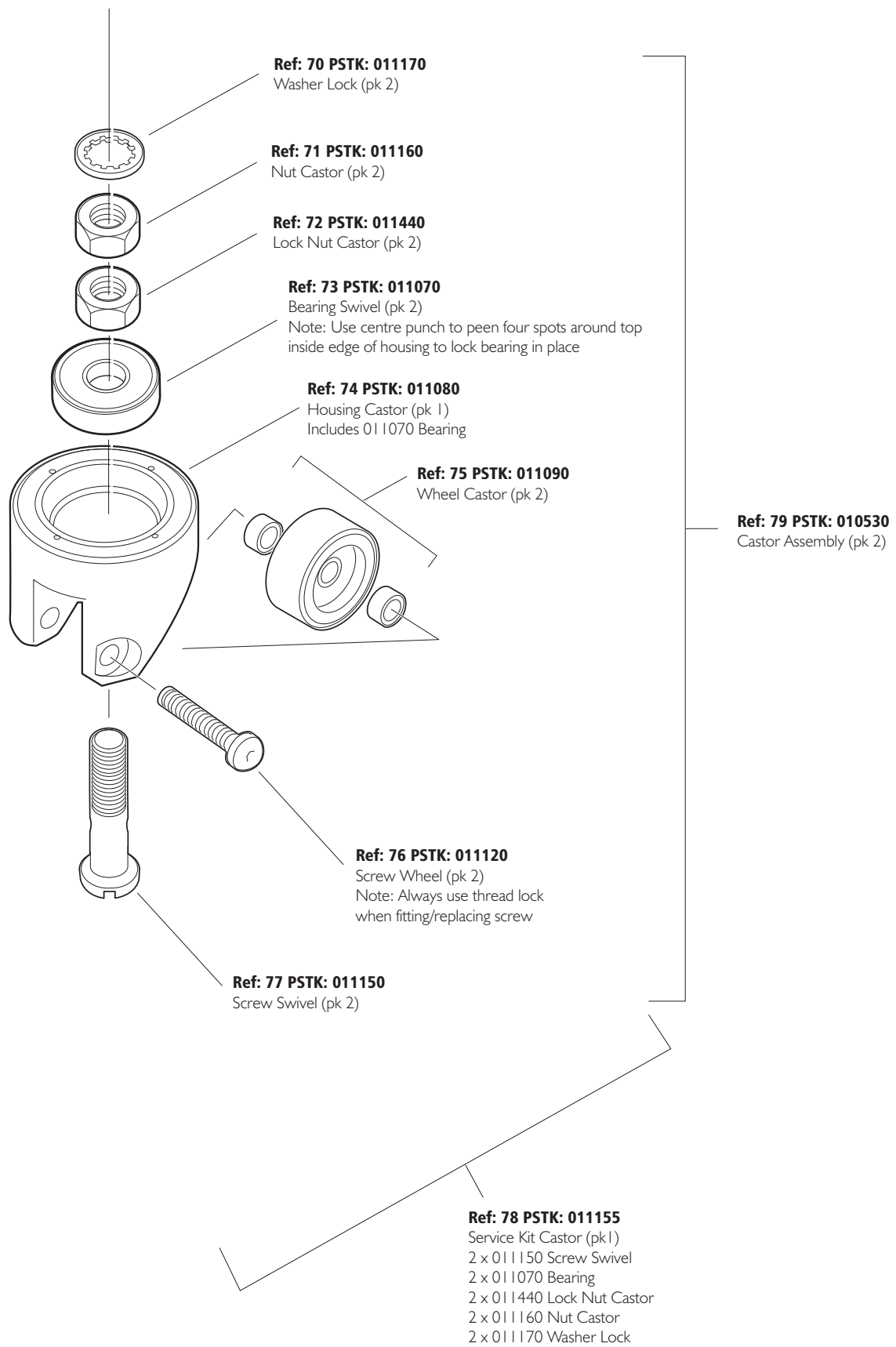
HIRETECH HT7-2 DISC FLOOR SANDER PARTS LIST

Ref	PSTK	Description	Pack Qty	Notes
080	011270	Grease Gear Disc Floor Sander	1	CAUTION: Wear protective gloves and eye/face shield. Store out of children's reach. Clean all components thoroughly, use complete contents of container for one HT7 gearbox. Spread grease evenly around gear and pinion.
250	011720	Service Tool - Castor Adjuster	1	
250	011731	Service Tool - Sanding Pad Fitting/Removal	1	
250	011740	Service Tool - Pinion & Pulley Fitting/Removal	1	
250	011850	Service Tool - Extractor Gear Cover	1	
250	011860	Service Tool - Extractor Seal	2	
250	011750	Service Tool - Castor Mounting Thread Repair Kit	1	
250	010760	Carton	1	

HIRETECH HT7-2 DISC FLOOR SANDER PARTS DRAWING



HIRETECH HT7-2 DISC FLOOR SANDER CASTOR ASSEMBLY



Note: Always reset castors and check sanding pad contact area when servicing castors. See Owners Manual & Operating Instructions