

## HIRETECH HT8-1.2 EX MULTI-SPEED DRUM FLOOR SANDER PARTS LIST

| Ref | PSTK   | Description  | Pack Qty | Notes                            |
|-----|--------|--|----------|----------------------------------|
| 001 | 962308 | Screw  | 1        |                                  |
| 002 | 980652 | Washer   | 2        |                                  |
| 003 | 162019 | Clamp Handle   | 1        |                                  |
| 004 | 163907 | Handle Cross   | 1        |                                  |
| 005 | 101205 | Strain Relief  | 1        |                                  |
| 005 | 163691 | Strain Relief (NA)                                   | 1        |                                  |
| 006 | 101206 | Nut Lock   | 1        |                                  |
| 007 | 024520 | Switch Multi-Speed                                   | 1        |                                  |
| 008 | 024615 | Screw  | 6        |                                  |
| 009 | 024525 | Controller Switch Multi-Speed 240 Volt               | 1        |                                  |
| 009 | 024530 | Controller Switch Multi-Speed 110 Volt               | 1        |                                  |
| 010 | 163870 | Gasket Switch Housing                                | 1        |                                  |
| 011 | 024510 | Cover Switch Multi-Speed                             | 1        |                                  |
| 012 | 024620 | Screw and Washer Set                                 | 6        |                                  |
| 013 | 007633 | Heat Sink Compound                                   | 1        |                                  |
| 014 | 024515 | Key Pad Switch                                       | 1        |                                  |
| 015 | 020300 | Multi-Speed Conversion Kit HT8/DU8 220/240 Volt (UK) | 1        |                                  |
| 015 | 020305 | Multi-Speed Conversion Kit HT8/DU8 110 Volt (UK)     | 1        |                                  |
| 015 | 020310 | Multi-Speed Conversion Kit HT8/DU8 220 Volt (EEC)    | 1        |                                  |
| 015 | 020315 | Multi-Speed Conversion Kit HT8/DU8 240 Volt (AUS)    | 1        |                                  |
| 015 | 020320 | Multi-Speed Conversion Kit HT8/DU8 110 Volt (NA)     | 1        |                                  |
| 016 | 169015 | Tube Handle Multi-Speed                              | 1        |                                  |
| 017 | 980615 | Washer   | 2        |                                  |
| 018 | 101220 | Strain Relief Handle Cable                           | 1        |                                  |
| 018 | 163804 | Strain Relief Handle Cable (NA)                      | 1        |                                  |
| 019 | 164508 | Hook Cable   | 1        |                                  |
| 020 | 024560 | Cable Handle Multi-Speed MS 240V (UK)                | 1        |                                  |
| 020 | 024575 | Cable Handle Multi-Speed 110 Volt (UK)               | 1        |                                  |
| 020 | 024580 | Cable Handle Multi-Speed (NA)                        | 1        |                                  |
| 021 | 960180 | Clamp Handle Bracket                                 | 1        |                                  |
| 022 | 960183 | Bracket Handle Cross                                 | 1        |                                  |
| 023 | 911045 | Base Twist Lock                                      | 1        |                                  |
| 024 | 911046 | Body Twist Lock                                      | 1        |                                  |
| 025 | 163867 | Lead Earth Base Twist Lock                           | 1        |                                  |
| 026 | 163808 | Grommet  | 1        |                                  |
| 027 | 024820 | Guard Drum Side EX                                   | 1        |                                  |
| 028 | 165103 | Label 'Lift Here & At Rear' (Metal)                  | 1        |                                  |
| 029 | 163202 | Main Frame EX  | 1        |                                  |
| 030 | 167804 | Shield Wall End                                      | 1        |                                  |
| 031 | 962084 | Screw  | 4        |                                  |
| 032 | 024985 | Abrasive Guide Spacer (200mm wide abrasive)          | 1        | Use with 200mm wide abrasive     |
| 032 | 024990 | Abrasive Guide Spacer (8in wide abrasive)            | 1        | Use with 8 inch wide abrasive    |
| 033 | 024995 | Abrasive Guide Retainer                              | 1        |                                  |
| 034 | 962204 | Screw  | 5        |                                  |
| 035 | 024822 | Guard Drum Front EX                                  | 1        | Includes PSTK:121252 Label Guard |
| 036 | 121252 | Label Guard Drum                                     | 1        |                                  |
| 037 | 024915 | Clip Guard Drum                                      | 1        |                                  |
| 039 | 024535 | Cable Main Assembly Multi-Speed 240 Volt (UK)        | 1        |                                  |
| 039 | 024540 | Cable Main Assembly Multi-Speed 240 Volt (AUS)       | 1        |                                  |
| 039 | 024545 | Cable Main Assembly Multi-Speed 220 Volt (EEC)       | 1        |                                  |
| 039 | 024550 | Cable Main Assembly Multi-Speed 110 Volt (UK)        | 1        |                                  |
| 039 | 024555 | Cable Main Assembly Multi-Speed 110 Volt (NA)        | 1        |                                  |
| 043 | 010200 | Washer   | 4        |                                  |
| 045 | 920148 | Nut  | 1        |                                  |

## HIRETECH HT8-1.2 EX MULTI-SPEED DRUM FLOOR SANDER PARTS LIST

| Ref | PSTK   | Description                                   | Pack Qty | Notes  |
|-----|--------|---|----------|--|
| 046 | 024600 | Buffer Rubber                                 | 1        |  |
| 047 | 980197 | Washer  | 1        |  |
| 048 | 024605 | Bolt  | 1        |  |
| 049 | 030850 | Nut   | 2        |  |
| 050 | 167308 | Ring Retaining                                | 1        |  |
| 051 | 160815 | Bracket Handle Kit Complete                   | 1        |  |
| 052 | 980196 | Washer  | 1        |  |
| 053 | 962244 | Bolt  | 5        |  |
| 054 | 163796 | Bag Dust Cloth                                | 1        |  |
| 055 | 163826 | Retainer Dust Bag Disposable/Ring Seal        | 6        |  |
| 056 | 160809 | Bracket Exhaust                               | 1        |  |
| 057 | 163403 | Gasket Exhaust                                | 1        |  |
| 058 | 07037  | Disposable Paper Dust Bag HT8 Pack 2 (box 25) | 25       |  |
| 058 | 07039  | Disposable Paper Dust Bag HT8 (box 50)        | 50       |  |
| 059 | 163790 | Tube Exhaust                                  | 1        |  |
| 060 | 167708 | Shaft Floor Roller                            | 1        |  |
| 061 | 169704 | Roller Floor Assembly (with bearing)          | 2        |  |
| 062 | 902567 | Bearing (Fan & Floor Roller)                  | 4        |  |
| 063 | 467308 | Ring Retaining                                | 4        |  |
| 064 | 020010 | Support Floor Roller                          | 1        | Trim (dress) drum rubber after service or replacement, see See Owners Manual & Operating Instructions. |
| 065 | 962139 | Bolt  | 2        |  |
| 066 | 980646 | Washer  | 2        |  |
| 067 | 962103 | Screw   | 1        |  |
| 072 | 167905 | Shoe Intake EX                                | 1        | Part must only be used on HT8 EX models with expanding drum  |
| 073 | 163636 | Cover Inlet                                   | 1        |  |
| 074 | 167404 | Rod Drum Guard                                | 1        |  |
| 075 | 920256 | Nut   | 1        |  |
| 077 | 980629 | Washer  | 1        |  |
| 078 | 169504 | Weight Balance                                | 1        |  |
| 079 | 962409 | Screw   | 1        |  |
| 080 | 962170 | Screw   | 1        |  |
| 081 | 163791 | Guard Belt                                    | 1        |  |
| 082 | 163814 | Screw   | 3        |  |
| 083 | 163869 | Screw Guard Belt                              | 4        |  |
| 084 | 024810 | Guard Wall End EX                             | 1        |  |
| 085 | 980623 | Washer  | 2        |  |
| 086 | 962109 | Screw   | 8        |  |
| 087 | 167312 | Ring Retaining                                | 1        |  |
| 088 | 164202 | Housing Fan                                   | 1        |  |
| 089 | 168203 | Spacer Fan Bearing                            | 1        |  |
| 090 | 025120 | Buffer Guard Drum EX                          | 2        |  |
| 091 | 008212 | Spacer Fan                                    | 1        |  |
| 092 | 163004 | Fan Intake                                    | 1        |  |
| 093 | 162021 | Clamp Bearing                                 | 2        |  |
| 094 | 167608 | Seal fan                                      | 1        |  |
| 095 | 167210 | Retainer Seal                                 | 1        |  |
| 096 | 010210 | Screw   | 4        |  |
| 097 | 166906 | Pulley Fan                                    | 2        |  |
| 098 | 915028 | Key   | 6        |  |
| 099 | 167704 | Shaft Fan                                     | 1        |  |

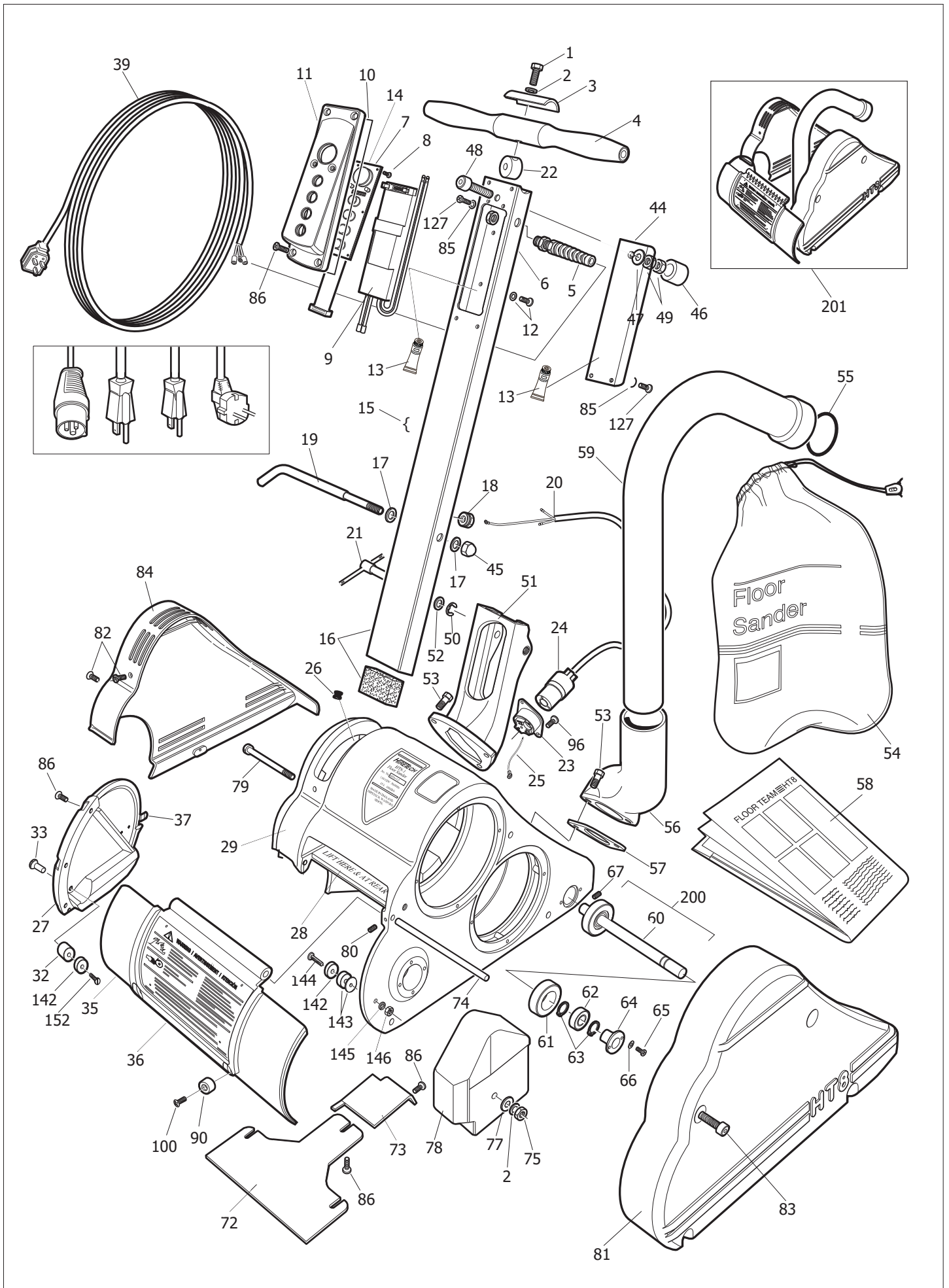
## HIRETECH HT8-1.2 EX MULTI-SPEED DRUM FLOOR SANDER PARTS LIST

| Ref | PSTK   | Description  | Pack Qty | Notes   |
|-----|--------|--|----------|---|
| 100 | 010220 | Screw and Washer Set                               | 4        | Washer not required when fitting Ref: 55 PSTK: 010630 Retainer  |
| 101 | 980648 | Washer   | 2        |   |
| 102 | 980626 | Washer Lock  | 3        |   |
| 103 | 920132 | Nut  | 3        |   |
| 104 | 010180 | Brush Motor  | 4        | Do not allow any one motor brush to wear below a minimum length of 12mm (1/2in). Always replace motor brushes as a set of 4   |
| 109 | 010230 | Brush Spring                                       | 4        | Replace brush springs every two (2) sets of motor brushes, always replace as a set of 4.  |
| 110 | 911662 | Lead Motor Assembly                                | 1        |   |
| 111 | 167302 | Ring Retaining                                     | 1        |   |
| 113 | 168104 | Sleeve   | 1        |   |
| 114 | 163104 | Field 110/120 Volt HT8                             | 1        |   |
| 114 | 163112 | Field 220/240 Volt HT8                             | 1        |   |
| 115 | 962401 | Screw  | 2        |   |
| 116 | 166172 | Baffle Motor                                       | 1        |   |
| 117 | 167204 | Retainer Baffle                                    | 1        |   |
| 118 | 160408 | Armature 110/120 Volt                              | 1        | Kit includes 1 x PSTK:163682 Bearing 1 x PSTK:163877 Retainer 3 x PSTK:000350 Key   |
| 118 | 160412 | Armature 220/240 Volt                              | 1        | Kit includes 1 x PSTK:163682 Bearing 1 x PSTK:163877 Retainer 3 x PSTK:000350 Key   |
| 119 | 980004 | Spacer   | 2        |   |
| 121 | 163008 | Fan Motor  | 1        |   |
| 123 | 167802 | Shield Pulley                                      | 1        |   |
| 124 | 024885 | Bearing Drum Shaft EX                              | 2        |   |
| 125 | 163682 | Bearing Armature                                   | 2        |   |
| 126 | 062003 | Clamp Bearing                                      | 2        | Note only 1 required on motor   |
| 127 | 962345 | Screw  | 10       |   |
| 128 | 168212 | Spacer Motor Pulley                                | 1        |   |
| 129 | 163304 | Flange Pulley                                      | 3        |   |
| 130 | 166909 | Pulley Motor                                       | 1        |   |
| 131 | 024870 | Clamp Bearing                                      | 1        |   |
| 140 | 163789 | Brush Block Assembly                               | 1        |   |
| 142 | 024840 | Guide Abrasive Kit                                 | 2        | Kit Includes: 2 x 024850 Abrasive Guide, 1 x 024855 Screw Abrasive Guide Main Frame, 1 x 024865 Screw Abrasive Guide Drum Guard   |
| 142 | 024850 | Guide Abrasive                                     | 1        |   |
| 143 | 024845 | Abrasive Guide Spacer (8in & 200mm wide abrasives) | 5        | Use thick spacer (7mm) only for 8in wide abrasives. Use thick spacer (7mm) and thin spacer (1.5mm) for 200mm wide abrasives. Gap between edge of drum and abrasive guide as follows. 200mm wide abrasive gap 1.2 to 2.5mm. 8in wide abrasive 3/32in to 5/32in |
| 144 | 024855 | Screw Guide Abrasive Main Frame                    | 1        |   |
| 145 | 031660 | Washer Lock  | 1        |   |
| 146 | 024860 | Nut Lock   | 1        |   |
| 149 | 024875 | Shaft Drum EX                                      | 1        |   |

## HIRETECH HT8-1.2 EX MULTI-SPEED DRUM FLOOR SANDER PARTS LIST

| Ref | PSTK   | Description   | Pack Qty | Notes  |
|-----|--------|---|----------|--|
| 152 | 024865 | Screw Guide Abrasive Drum Guard                       | 1        |  |
| 159 | 024880 | Pulley Drum EX  | 1        |  |
| 164 | 903260 | Belt Drum 3/4" (19mm) Wide                            | 1        |  |
| 165 | 903273 | Belt Fan 1/2" (13mm) Wide                             | 1        |  |
| 167 | 024890 | Spacer Bearing  | 1        |  |
| 168 | 020205 | Drum Assembly Complete EX Exchange (conditions apply) | 1        |  |
| 168 | 020200 | Drum EX   | 1        |  |
| 169 | 024895 | Washer Drum Shaft EX                                  | 1        |  |
| 170 | 163012 | Assembly Fan Intake                                   | 1        |  |
| 173 | 011170 | Washer Lock   | 2        |  |
| 174 | 024900 | Bolt Drum Shaft EX                                    | 1        |  |
| 176 | 925113 | Pin Drum Shaft  | 1        |  |
| 179 | 024960 | Owners Manual & Operating Instructions Multi Speed EX | 1        |  |
| 200 | 101219 | Floor Roller Assembly                                 | 1        |  |
| 201 | 024950 | Kit Moulded Guards EX                                 | 1        |  |
| 201 | 024955 | Kit Moulded Guards EX (excluding Tube Exhaust)        | 1        |  |
| 250 | 163865 | Service Tool - Locking Drum                           | 1        |  |
| 250 | 024500 | Test Lead   | 1        | IMPORTANT: Read instructions before using test lead. |
| 250 | 024502 | Test Lead (NA)  | 1        | IMPORTANT: Read instructions before using test lead. |
| 250 | 011860 | Service Tool - Extractor Seal                         | 2        |  |

# HIRETECH HT8-1.2 EX MULTI-SPEED DRUM FLOOR SANDER PARTS DRAWING



# HIRETECH HT8-1.2 EX MULTI-SPEED DRUM FLOOR SANDER PARTS DRAWING

